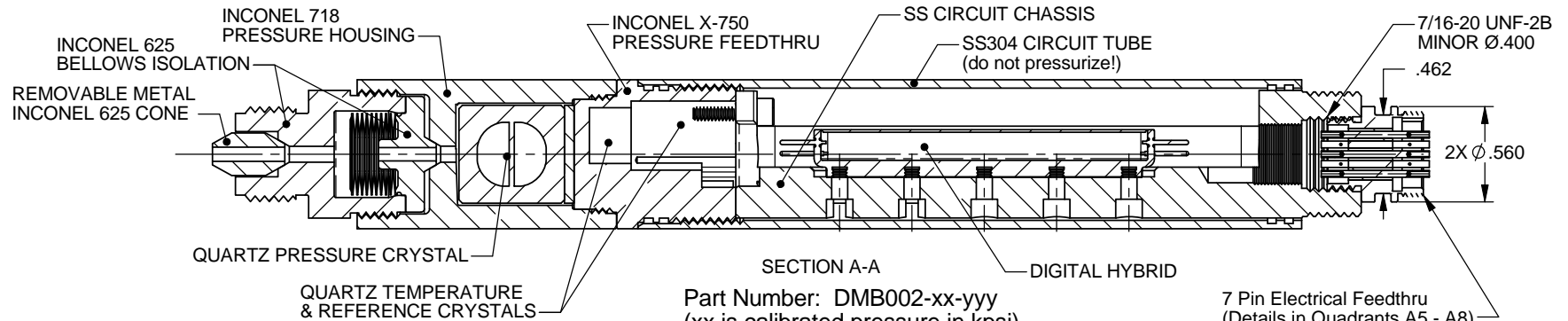
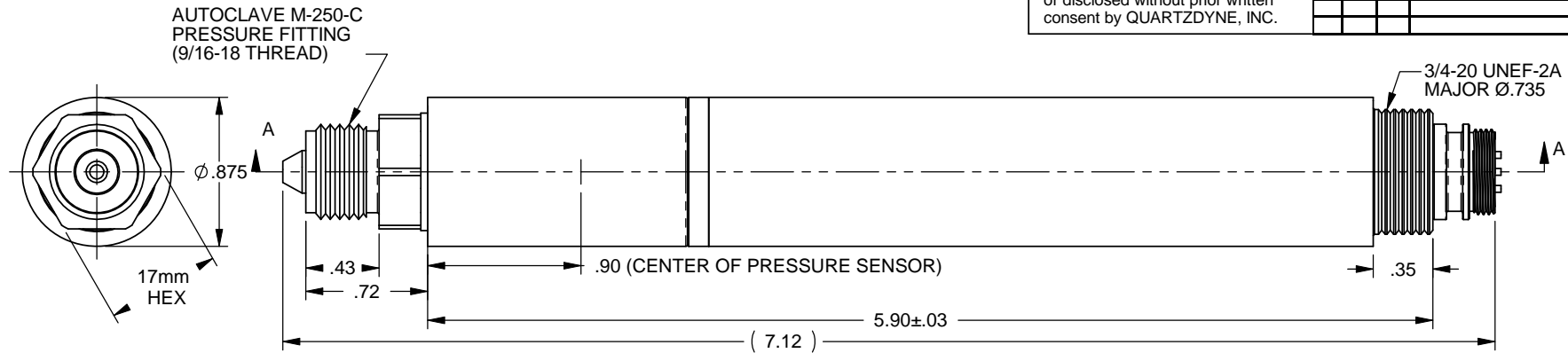


The information contained herein is proprietary and confidential. It may not be reproduced, used, or disclosed without prior written consent by QUARTZDYNE, INC.

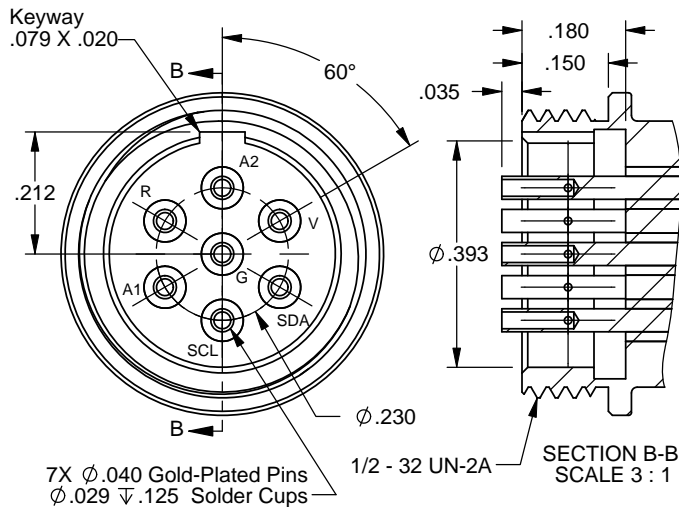
REV	ECO	INITL	DESCRIPTION	DATE
A0	906	LJP	Initial release	31Mar04
A1	1925	KRH	Add SS header - Remove Fischer	30Oct09



Part Number: DMB002-xx-yyy  
 (xx is calibrated pressure in kpsi)  
 (yyy is calibrated temperature in °C)

7 Pin Electrical Feedthru  
 (Details in Quadrants A5 - A8)

If the feedthru is removed, the five output wires are approx. 4" in length. 26-28 AWG, TFE Insulation



**Connector Pinout:**  
 V = Supply, 2.7-5.5 VDC (Blue)  
 G = Ground (Black)  
 SCL = Clock (Slate)  
 SDA = Data (Green)  
 A1 = Address 1 (Yellow)  
 A2 = Address 2 (Purple)  
 R = Ref. Freq. (White)

UNLESS OTHERWISE SPECIFIED:  
 -DIMENSIONS ARE IN INCHES. GENERAL TOLERANCES:  
 DECIMAL: .XX = ±.01 .XXX = ±.005, ANGULAR ±1°  
 -PARENTHETICAL INFORMATION IS REFERENCE ONLY.  
 -DIMENSIONAL LIMITS APPLY AFTER PROCESSES.  
 -REMOVE ALL BURRS AND SHARP EDGES, R .015 MAX.  
 -PARTS SHALL BE FREE OF OILS AND CONTAMINANTS.  
 -FILLET RADII ARE .016 MAXIMUM.  
 -APPLICABLE STANDARDS AND SPECIFICATIONS:  
 ANSI Y14.5M-1982 DIMENSIONING & TOLERANCING  
 -SURFACE FINISH: 125 μ" AA OR BETTER

PART NUMBER: <b>DMB002-xx-yyy</b>	REVISION: -
DRAWING NUMBER: <b>DMB002</b>	REVISION: -
MATERIAL SPECIFICATION: -	NOTES: -
NOMENCLATURE OR DESCRIPTION: -	
SCALE 1:1	DO NOT SCALE
SHEET 1 of 1	

Quartzdyne, Inc.  
 Salt Lake City, Utah, U.S.A.  
 Tel 801.266.6958  
 Fax 801.266.7985  
 www.quartzdyne.com/

TITLE:  
**Series DM Transducer**  
**Digital ASIC - SS Header**