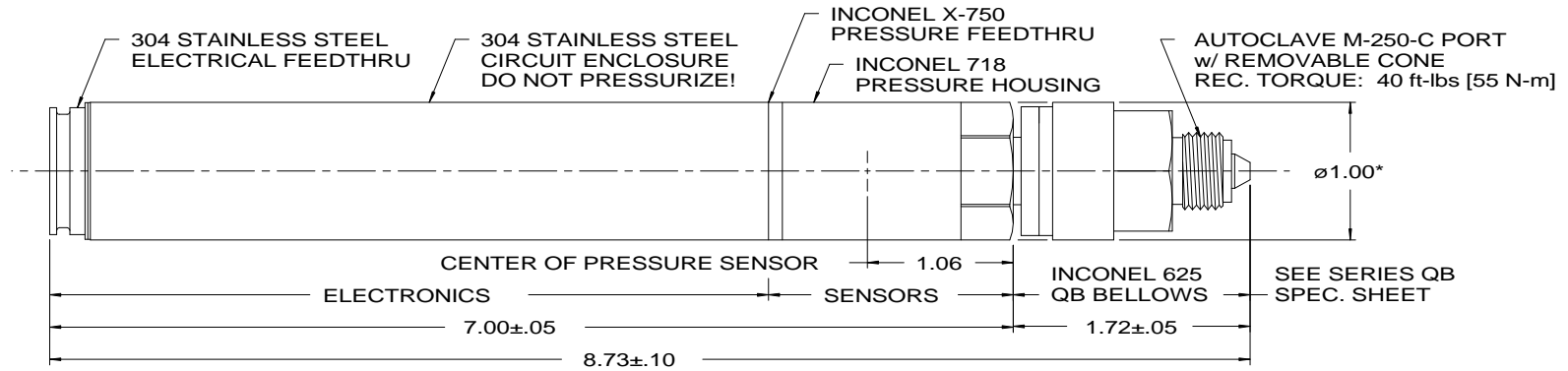
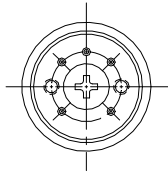


MECHANICAL DETAILS OF 1-INCH TRANSDUCERS

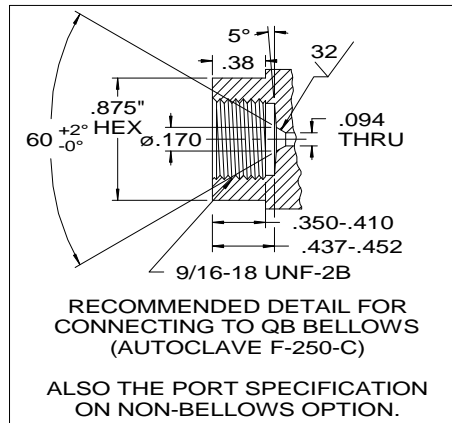


ELECTRONICS END VIEW

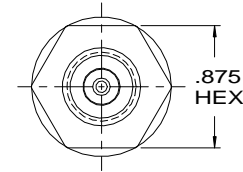


FOR PIN-OUT, SEE BELOW

© QUARTZDYNE, INC.
4 SEPTEMBER 2007

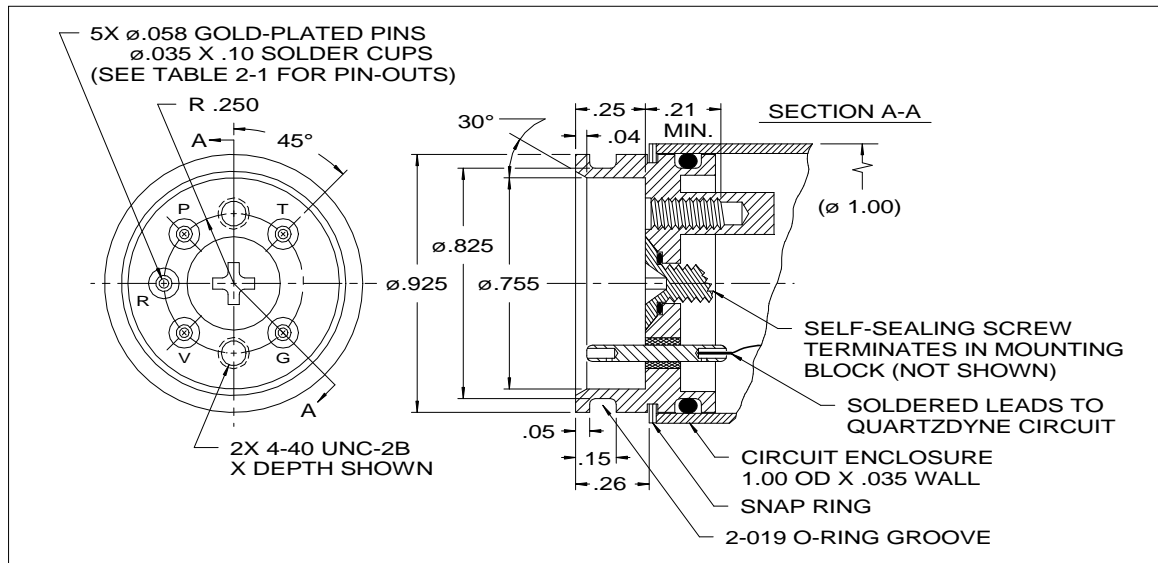


PRESSURE END VIEW



DIMENSIONS ARE IN INCHES.
TOLERANCES:
.XX = ±.02
.XXX = ±.005

* SOME AXIAL MISALIGNMENT AND/OR CIRCULAR RUNOUT MAY EXIST BETWEEN THE BELLOWS AND THE TRANSDUCER.





Mechanical Specifications for 1" Transducers

Proof Pressure..... 30,000 psia [2068 bar]
 Pressure Media..... Particle-free fluid compatible with Inconel 625
 Mechanical Shock..... 500 g, 2ms half-sine
 Vibration Survives random vibration per NAVMAT P-9492 3.2.1
 Weight 10 oz. [283 g]
 Overpressure without Sensor Damage Varies with temperature; see plot below

