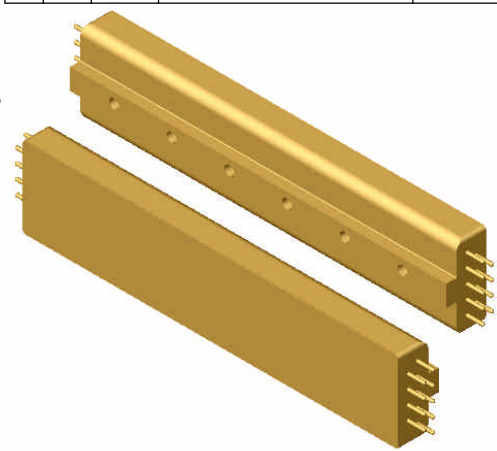
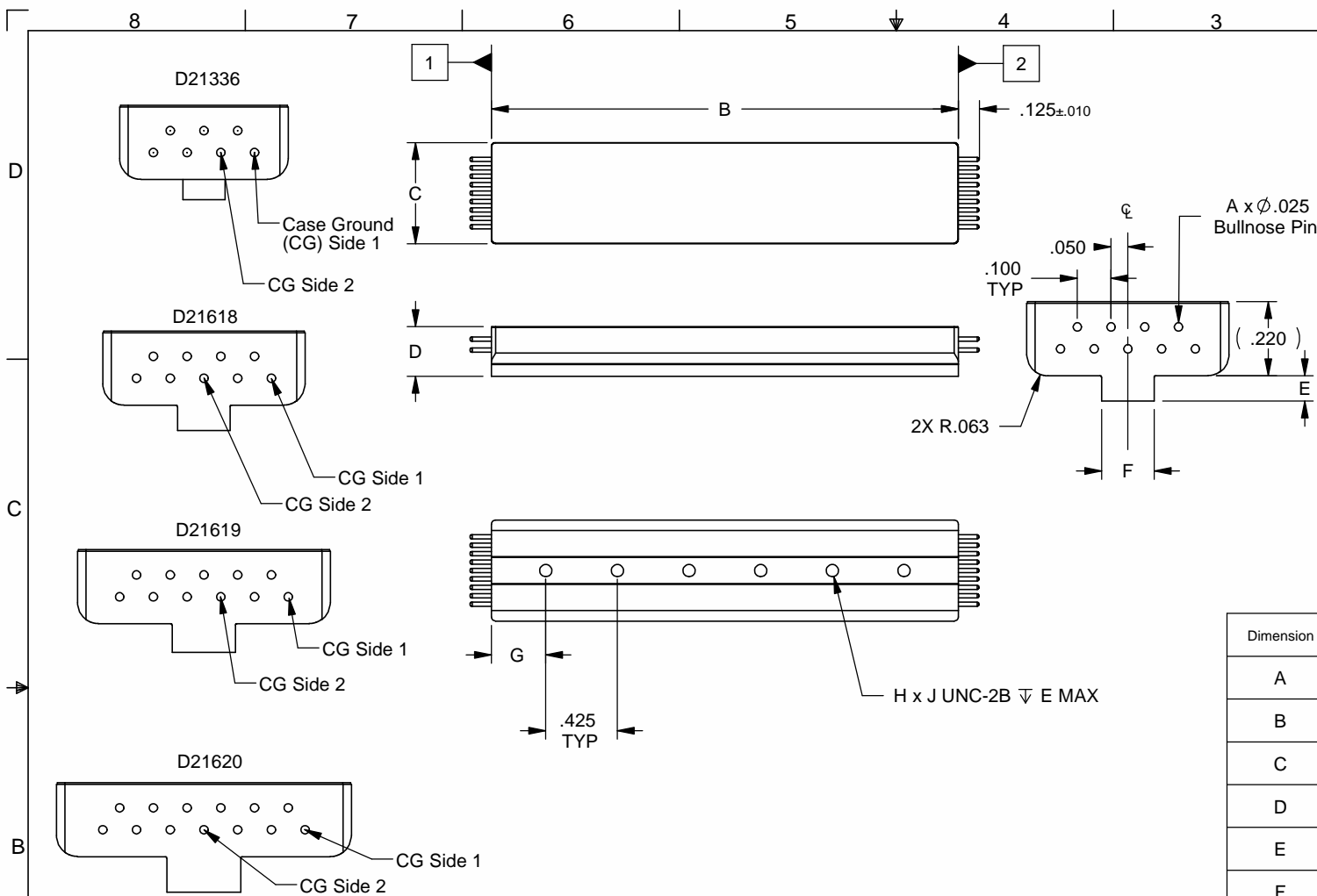
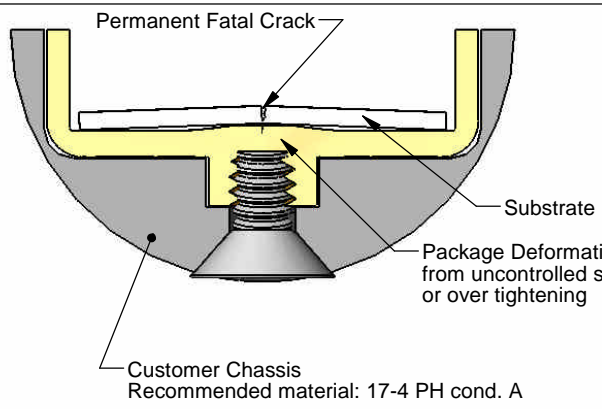


FILE: \source\...D21630A0	1			
Rev	ECO	Author	Description	Date
A0	1338	BTL	Initial Release	7/03/08



Dimension	D21336	D21618	D21619	D21620
A	14	18	22	26
B	2.040	2.770	3.270	3.760
C	.500	.600	.750	.875
D	.280	.295	.305	.325
E	.060	.075	.085	.105
F	.125	.156	.188	.219
G	.170	.323	.360	.220
H	5	6	7	9
J	2-56	2-56	4-40	4-40
Torque (in-oz)	52	52	N/A	N/A
Substrate Size (in)	.375 x 1.80	.500 x 2.50	.600 x 3.00	.750 x 3.50

Recommended Mounting Instructions



Only use screws with a max tolerance equal to value E for the corresponding product. Longer screws can cause permanent damage to product.

Custom screws are available for D21336 package upon request

UNLESS OTHERWISE SPECIFIED: ·DIMENSIONS ARE IN INCHES. GENERAL TOLERANCES: DECIMAL: .XX = ±.01 .XXX = ±.005, ANGULAR ±1° ·PARENTHEICAL INFORMATION IS REFERENCE ONLY. ·DIMENSIONAL LIMITS APPLY AFTER PROCESSES. ·REMOVE ALL BURRS AND SHARP EDGES, R .015 MAX. ·PARTS SHALL BE FREE OF OILS AND CONTAMINANTS. ·FILLET RADII ARE .016 MAXIMUM. ·APPLICABLE STANDARDS AND SPECIFICATIONS: ANSI Y14.5M-1982 DIMENSIONING & TOLERANCING ·SURFACE FINISH: 125 μ" AA OR BETTER	PART NUMBER: D21630-01	REVISION: A0
	DRAWING NUMBER: D21630	REVISION: A0
	MATERIAL SPECIFICATION: -	NOTES: -
	NOMENCLATURE OR DESCRIPTION: -	
	SCALE: 1:1	DO NOT SCALE
	SHEET: 1 of 1	


Quartzdyne, Inc.
 1020 Atherton Drive
 Salt Lake City, Utah 84123, U.S.A.
 Tel 801.266.6958; Fax 801.266.7985
 www.quartzdyne.com

TITLE: **Hybrid Package**